

**MICROCONTROLLER
DIVISION**

**QUALITY &
RELIABILITY**



**Reliability
Monitoring
2007 Q2**

RELIABILITY MONITORING RESULTS ALL MICROCONTROLLER'S

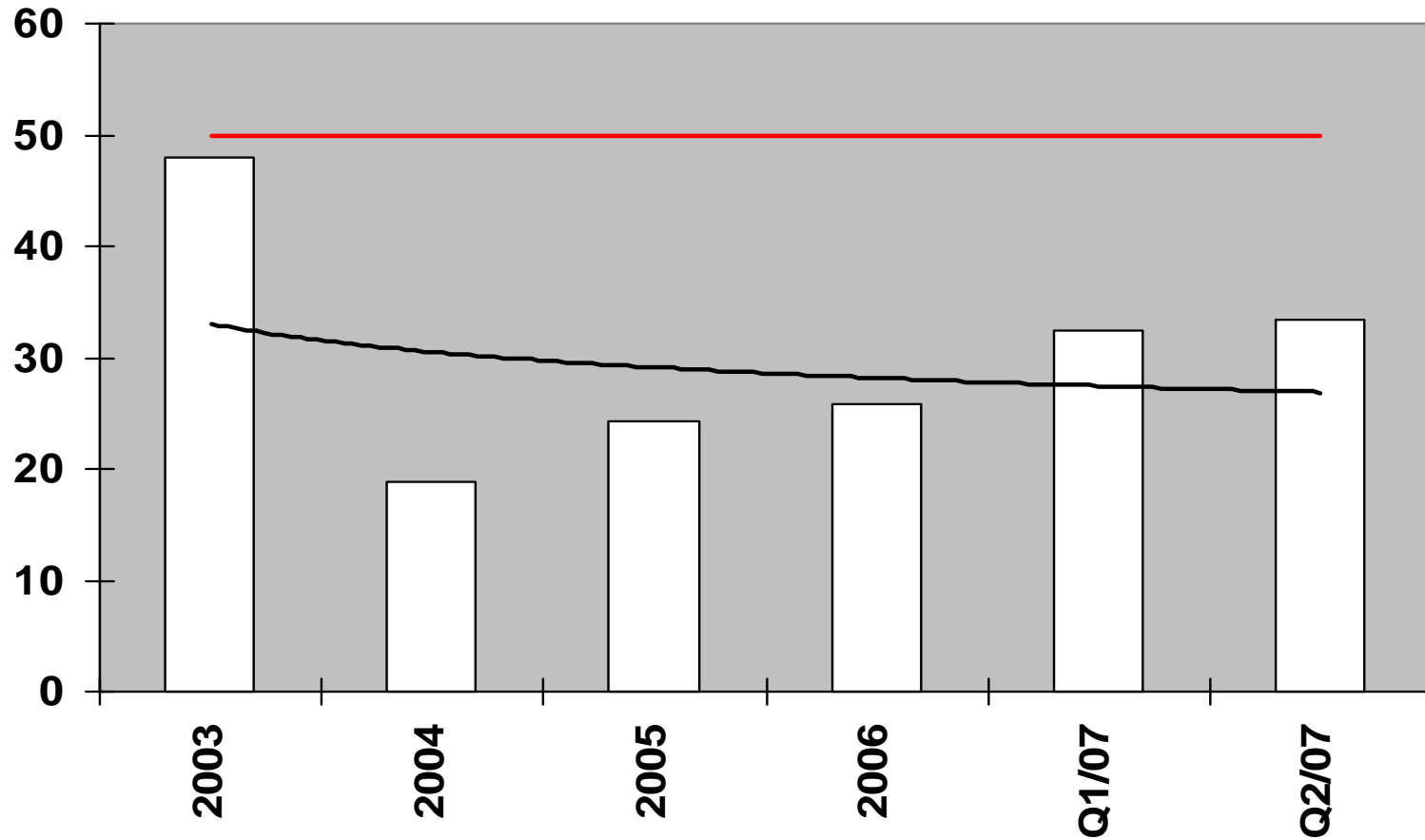
PERIOD : Q3/06 TO Q2/07

OPERATING LIFE TEST

24 Hrs	168 Hrs	504 Hrs	1008 Hrs
--------	---------	---------	----------

- **EARLY FAILURE RATE :** **33 PPM**
(**60% C.L.**)
- **FAILURE RATE @ 55°C :** **2.4 FITs**
(**Ea = 0.7eV, 60% C.L.**)

EARLY FAILURE RATE (PPM)



LONG TERM RELIABILITY (FIT)

